

SIMPLY CLEVER

ŠKODA



COMPLETE WINTER WHEELS



Why choose Original ŠKODA Accessories

Your car is only a sum of its parts. With us, you are assured of products and accessories that were designed specifically for the individual ŠKODA models.

We provide you with a one-stop-shop for not just a wide range of complete winter wheels, but also other accessories like snow chains and ski racks.

We combine the rims with tires from renowned manufacturers who meet strict European standards, thus making sure you only receive the very best.

Technology is nothing without a personal touch. When choosing your tires or accessories, our extremely qualified personnel will guide you at every step.

Why choose Complete Wheels

Winter is around the corner and you must perform the necessary but boring task of taking the summer tires off the rims and fitting the winter ones. However, such repeated mounting and demounting of the tire from the rim can deform both. With Complete Wheels you buy the rim and the wheel as a set which makes changing tires safer and simpler.





Read your tire like a book

Tire width in mm

Ratio of tire height to its width in %

Tire design (R = radial)

Rim diameter in inches

Load index

Speed index

DOT symbol introduces a code identifying the year and week when the tire was manufactured.

Load index

Code	Kg	Code	Kg
71	345	91	615
72	355	92	630
73	365	93	650
74	375	94	670
75	387	95	690
76	400	96	710
77	412	97	730
78	425	98	750
79	437	99	775
80	450	100	800
81	462	101	825
82	475	102	850
83	487	103	875
84	500	104	900
85	515	105	925
86	530	106	950
87	545	107	975
88	560	108	1000
89	580	109	1030
90	600	110	1060

Speed index

Code	km/h	Code	km/h
A1	5	L	120
A2	10	M	130
A3	15	N	140
A4	20	O	150
A5	25	P	160
A6	30	Q	170
A7	35	R	180
A8	40	S	190
B	50	T	200
C	60	H	210
D	65	VR	210
E	70	V	240
F	80	W	270
G	90	Y	300
J	100	ZR	300
K	110		

When choosing complete winter wheels, it is necessary to refer to the data stated in the technical certificate of your vehicle.

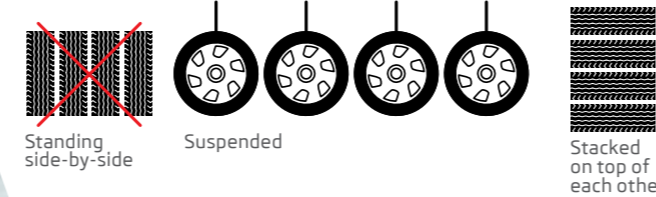
How to care for your tires when they aren't turning.

Usually, the chemical and physical processes in the tire material cause it to age. However, in properly stored tires and Complete Wheels, these processes are much slower, thus extending their life. A few tips:

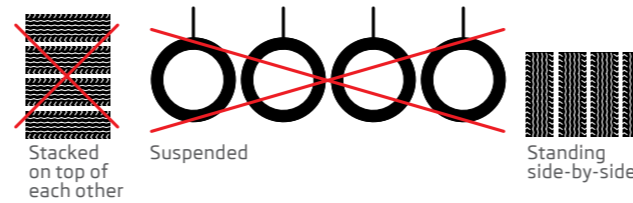
- Store the tires in a cool, dry place
- Keep them away from direct light, chemicals and ozone sources
- Before storing, use a tire brush to remove brake dust, dirt and grime.
- If possible, avoid any moisture from entering the tires.

While all tires will eventually age, following the above precautions will help them retain their original wellbalanced properties for much longer.

Tires with rim



Tires without rim



The ŠKODA Tire Guarantee - a damaged tire won't damage your wallet.

Even the highest quality tires aren't totally immune to the baits they encounter on the road. Whether caused by nails, sharp curbs or rocks, tire damage is usually so extensive that you must purchase a new one. This is why the **ŠKODA Tire Guarantee** programme ensures that a destroyed tire won't upset your finances.

With this guarantee you can enjoy a **discount of up to 70% on the new tire price**.

You automatically qualify for this Guarantee when you buy the complete winter wheel package from an authorised ŠKODA business partner or ŠKODA e-shop. The guarantee is provided for individual tyres, regardless of how many you purchase. It applies to non-repairable damage caused in normal operation, including, but not limited to, running onto a curb. If you have the lifetime guarantee of mobility valid, you can also have your vehicle towed to the nearest ŠKODA authorised service shop.

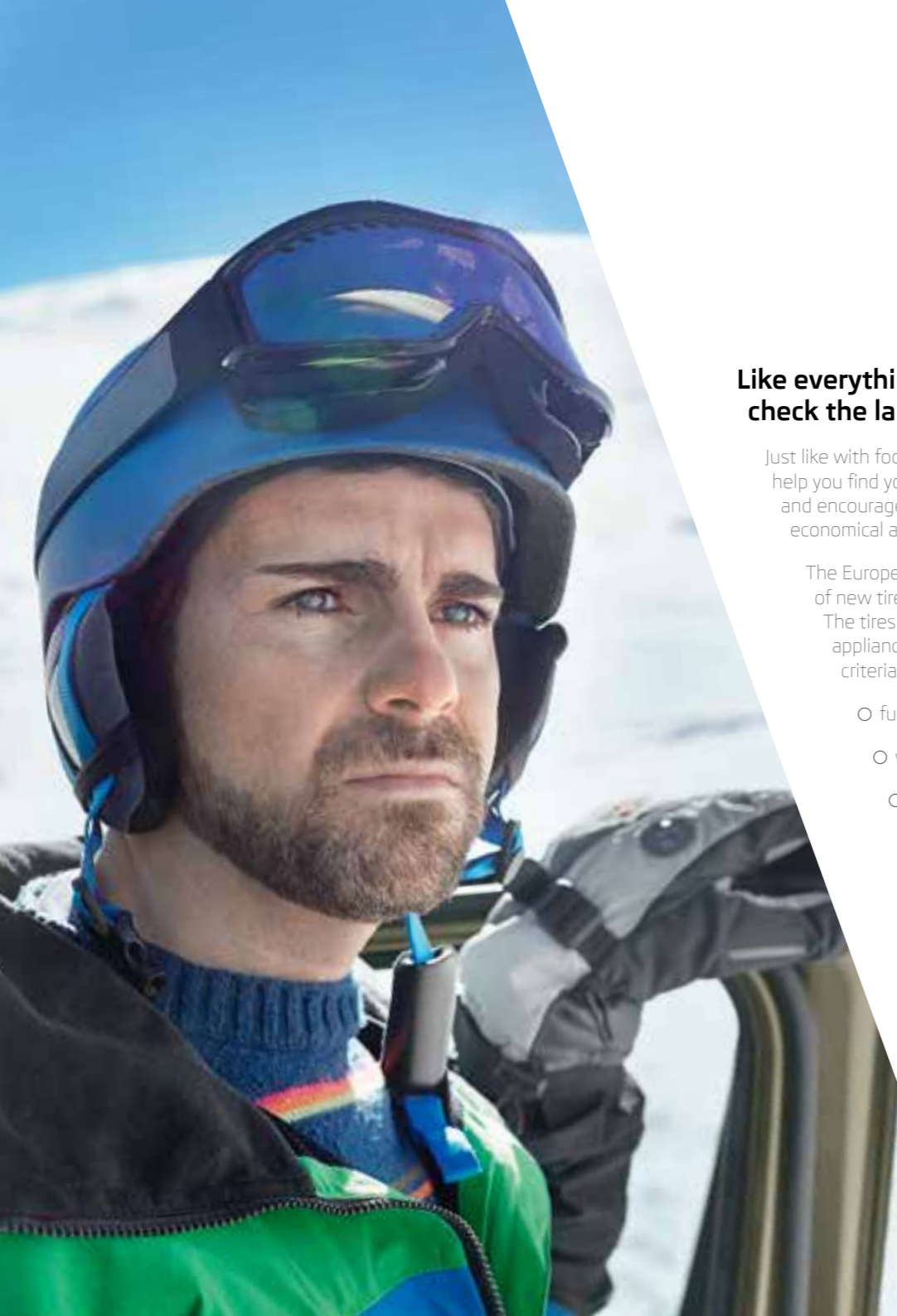
The discount amount (as well as the guarantee duration) depends on the depth of the tire tread profile, with the limit being 4 mm.

You can register the guarantee with any ŠKODA authorised partner in the Czech Republic.



ŠKODA
Pneugarance





Like everything else, check the label first.

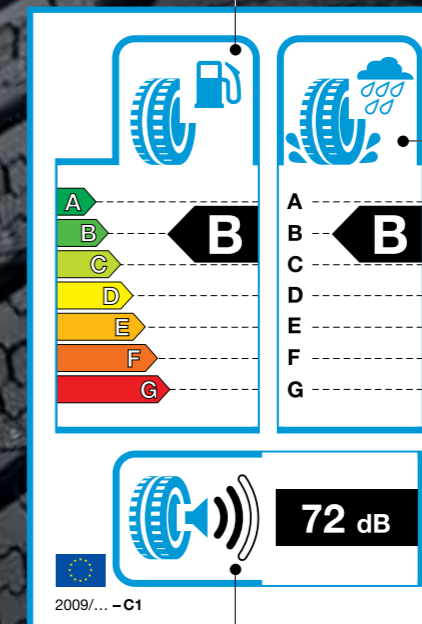
Just like with food in a supermarket, labels on new tires help you find your way amongst the options. They inform and encourage you to choose tires that are safer, more economical and also ecological.

The European Union regulation on mandatory marking of new tires has been in operation for several years.

The tires sold in EU bear a label similar to those on home appliances, identifying the performance class in three criteria:

- fuel efficiency
- wet adhesion
- outside noise.

While the information on labels is important, it's not the only guide to correct tire selection. For your maximum comfort and safety, it is necessary to start from your individual needs and stick to the tire dimensions stipulated by the vehicle manufacturer.



Fuel consumption Rolling resistance

Reducing rolling resistance results in fuel savings, thereby reducing CO2 emissions. The classification is given in classes from A (green) to G (red), (class D is not used). **±0,1 l per 100 km for each class**

Grip in wet conditions Braking performance

The crucial factor for safety is, among other things, the grip of the tyres in wet conditions. Here, the braking power is divided into classes A to G (classes D and G are not used). The difference in braking distances between individual classes on a wet road at default speed of 80 km/h is between 3–6 meters, i.e. more than the length of the vehicle.

≥ 18 meters difference in braking distance

Noise level

The external tyre rolling noise is measured and the value is given in decibels. The pictogram includes three stripes, where a higher number of black stripes means higher external rolling noise.

ENJOY WINTER EVEN IN BAD WEATHER

Mandatory Winter Equipment

In accordance with the Road Act, winter tires are mandatory in the period between 1 November and 31 March if continuous snow, ice or frost coat are expected on the road. But this isn't just about the law. It's about your safety. It helps to remember that:

- risk of accident is six times higher in winter
- summer tires lose their capacities at temperatures below +7 °C.

Head out to the mountains to indulge in winter adventures regardless of the weather. All you need: winter tires on all four wheels with the minimum tread profile of 4mm.

Benefits of Winter Tires:

- they are made of mixtures specially developed for the winter period
- they have better adhesion at temperatures below +7 °C as compared to summer tires, which also results in shorter braking distance
- they perform well not only on snow-covered roads, but also on wet roads or on dry, cold surfaces
- thanks to the special treading, they drain the water better, reducing the risk of aquaplaning
- they keep the course better and can grip even when you run on snow.

Additional tire facts:

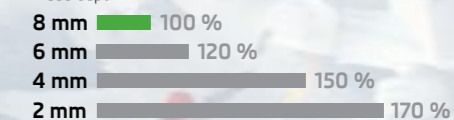
- new tires are considered run-in after about 300 km
- tire pressure needs to be checked for several times during winter

Contact your authorised ŠKODA partner to ask about the possibility of having your winter wheels stored during summer, and vice versa.

Impact of Winter Tire Tread Depth on Braking Distance

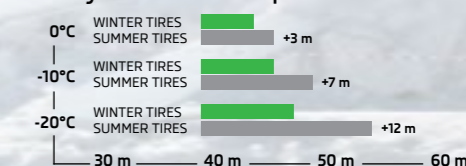
On snow-covered road

Tread depth



Comparison of Braking Distances of Winter and Summer Tires

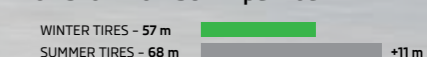
On dry road from 60 km per hour.



On snow from 50 km per hour.



On snow from 30 km per hour.



COMPLETE WINTER WHEELS FOR SUPERB II



Tire name: Michelin Pilot Alpin PA4
Tire dimensions: 225/40 R18 92V
EU label: E; C; 70
Rim: 7,5J × 18" ET46, alloy
Order code: CBX225408ALP4L/R
Price: 9 971 CZK



Tire name: Michelin Alpin A4
Tire dimensions: 205/50 R17 93V
EU label: E; C; 70
Rim: 6,0J × 17" ET45, alloy
Order code: CBX205507VBAL/R
Price: 8 591 CZK



Tire name: Continental TS 850
Tire dimensions: 205/55 R16 94H
EU label: C; B; 72
Rim: 7,0J × 16" ET45, alloy
Order code: CBX205556HB85L/R
Price: 7 041 CZK

COMPLETE WINTER WHEELS FOR YETI



Tire name: Bridgestone Blizzak LM32
Tire dimensions: 225/50 R17 98H
EU label: E; C; 70
Rim: 7,0J × 17" ET45, alloy
Order code: CBX225507LM32L/R
Price: 8 114 CZK



Tire name: Michelin Alpin A4
Tire dimensions: 205/50 R17 93V
EU label: E; C; 70
Rim: 6,0J × 17" ET45, alloy
Order code: CBX205507VBAL/R
Price: 8 591 CZK



Tire name: Continental TS 850
Tire dimensions: 205/55 R16 94H
EU label: C; B; 72
Rim: 7,0J × 16" ET45, alloy
Order code: CBX205556HB85L/R
Price: 7 041 CZK

COMPLETE WINTER WHEELS FOR OCTAVIA III



Tire name: Michelin Pilot Alpin PA4
Tire dimensions: 225/35 R19 88W
EU label: E; C; 70
Rim: 7,5J × 19" ET51, alloy
Order code: CBX225359ALP4L/R
Price: 17 186 CZK



Tire name: Michelin Alpin A4
Tire dimensions: 205/50 R17 93V
EU label: E; C; 70
Rim: 6,0J × 17" ET48, alloy
Order code: CBX205507ALP4L/R
Price: 8 773 CZK



Tire name: Michelin Alpin A4
Tire dimensions: 205/50 R17 93V
EU label: E; C; 70
Rim: 6,0J × 17" ET45, alloy
Order code: CBX205507VBAL/R
Price: 8 591 CZK



Tire name: Michelin Alpin 5
Tire dimensions: 205/55 R16 91H
EU label: E; B; 68
Rim: 6,5J × 16" ET46, alloy
Order code: CBX205556LEA5L/R
Price: 6 602 CZK



Tire name: Michelin Alpin 5
Tire dimensions: 205/55 R16 91H
EU label: E; B; 68
Rim: 6,5J × 16" ET48, alloy
Order code: CBX205556ALP5L/R
Price: 6 512 CZK

COMPLETE WINTER WHEELS FOR OCTAVIA II



Tire name: Michelin Alpin A4
Tire dimensions: 205/50 R17 93V
EU label: E; C; 70
Rim: 6,0J x 17" ET45, alloy
Order code: CBX205507VBAL/R
Price: 8 591 CZK

COMPLETE WINTER WHEELS FOR RAPID / RAPID SPACEBACK



Tire name: Pirelli Sotto Zero II
Tire dimensions: 215/45 R16 86H
EU label: C; B; 72
Rim: 7,0J × 16" ET46, alloy
Order code: CBX215456SZL/R
Price: 8 014 CZK



Tire name: Michelin Alpin A4
Tire dimensions: 185/60 R15 88T
EU label: E; C; 70
Rim: 6,0J × 15" ET38, alloy
Order code: CBX185605ALP4L/R
Price: 4 385 CZK



Tire name: Michelin Alpin A4
Tire dimensions: 185/60 R15 88T
EU label: E; C; 70
Rim: 6,0J × 15" ET38, alloy
Order code: CBX185605ALP5L/R
Price: 5 150 CZK

COMPLETE WINTER WHEELS FOR FABIA



Tire name: Michelin Alpin A4
Tire dimensions: 205/45 R16 87H
EU label: E; C; 70
Rim: 6,5J x 16" ET43, alloy
Order code: CBX205456LEA4L/R
Price: 6 955 CZK



Tire name: Nokian WR D3
Tire dimensions: 185/55 R15 86H
EU label: E; C; 71
Rim: 6,0J x 15" ET43, alloy
Order code: CBX185555WD3L/R
Price: 4 937 CZK

COMPLETE WINTER WHEELS FOR ROOMSTER



Tire name: Nokian WR D3
Tire dimensions: 185/55 R15 86H
EU label: E; C; 71
Rim: 6,0J x 15" ET43, alloy
Order code: CBX185555WD3L/R
Price: 4 937 CZK

COMPLETE WINTER WHEELS FOR CITIGO



Tire name: Michelin Alpin A4
Tire dimensions: 165/70 R14 81T
EU label: F; C; 70
Rim: 5,0J x 14" ET35, alloy
Order code: CBX165704LEA4L/R
Price: 4 082 CZK



LIST OF COMPLETE STEEL WHEELS



Model	Tire name	Tire producer	Tire dimensions	EU label*	Rim	Order code	Price incl. TAX
Superb II	TS 850	Continental	205/55 R16 94H	WHEEL C; C; 72dB	7,0J × 16" ET45	CAX205556HB65L/R	4 690 CZK
Superb II	TS 850	Continental	205/55 R16 94H	WHEEL C; C; 72dB	6,0J × 16" ET50	CAX205556HY55L/R	5 184 CZK
Superb II	Alpin 5	Michelin	205/55 R16 91H	WHEEL E; B; 68dB	7,0J × 16" ET45	CAX205556A591L/R	4 798 CZK
Superb II	Alpin 5	Michelin	205/55 R16 94H	WHEEL E; B; 68dB	6,0J × 16" ET50	CAX205556BA5L/R	5 087 CZK
Superb II	WR A3	Nokian	205/55 R16 94H	WHEEL C; C; 72dB	7,0J × 16" ET45	CAX205556B6A3L/R	3 931 CZK
Superb II	Snow Control Series 3	Pirelli	205/55 R16 91H	WHEEL E; B; 72dB	7,0J × 16" ET45	CAX205556SE5L/R	4 437 CZK
Octavia III	Polaris 3	Barum	195/65 R15 91T	WHEEL E; C; 71dB	6,0J × 15" ET43	CAX1956557PL3L/R	2 713 CZK
Octavia III	Polaris 3	Barum	195/65 R15 91H	WHEEL E; C; 71dB	6,0J × 15" ET47	CAX195655HP35L/R	2 962 CZK
Octavia III	TS 850	Continental	205/55 R16 94H	WHEEL C; C; 72dB	6,5J × 16" ET46	CAX205556H850L/R	4 808 CZK
Octavia III	TS 850	Continental	205/55 R16 94H	WHEEL C; C; 72dB	6,0J × 16" ET50	CAX205556HY55L/R	5 184 CZK
Octavia III	Alpin A4	Michelin	195/65 R15 91T	WHEEL E; C; 70dB	6,0J × 15" ET43	CAX195655TA7AL/R	3 060 CZK
Octavia III	Alpin 5	Michelin	205/55 R16 94H	WHEEL E; B; 68dB	6,0J × 16" ET50	CAX205556BA5L/R	5 087 CZK
Octavia III	WR D3	Nokian	195/65 R15 91T	WHEEL C; C; 72dB	6,0J × 15" ET47	CAX195655TA5L/R	3 061 CZK
Octavia III	WR D3	Nokian	195/65 R15 95H	WHEEL C; C; 72dB	6,0J × 15" ET43	CAX195655HA7L/R	3 506 CZK
Octavia III	WR A3	Nokian	205/55 R16 91H	WHEEL C; C; 72dB	6,5J × 16" ET46	CAX205556WRA4L/R	4 146 CZK
Octavia III	Snow Control Series 3	Pirelli	195/65 R15 91T	WHEEL E; B; 71dB	6,0J × 15" ET43	CAX195655SE3L/R	3 046 CZK
Octavia III	Snow Control Series 3	Pirelli	205/55 R16 91H	WHEEL E; B; 72dB	6,5J × 16" ET46	CAX205556SE6L/R	4 346 CZK
Octavia II	Polaris 3	Barum	195/65 R15 91H	WHEEL E; C; 71dB	6,0J × 15" ET47	CAX195655HP35L/R	2 962 CZK
Octavia II	TS 850	Continental	205/55 R16 94H	WHEEL C; C; 72dB	6,0J × 16" ET50	CAX205556HY55L/R	5 184 CZK
Octavia II	Alpin 5	Michelin	205/55 R16 94H	WHEEL E; B; 68dB	6,0J × 16" ET50	CAX205556BA5L/R	5 087 CZK
Octavia II	WR D3	Nokian	195/65 R15 91T	WHEEL C; C; 72dB	6,0J × 15" ET47	CAX195655TA5L/R	3 061 CZK
Yeti	TS 850	Continental	205/55 R16 94H	WHEEL C; C; 72dB	7,0J × 16" ET45	CAX205556HB65L/R	4 690 CZK
Yeti	TS 850	Continental	205/55 R16 94H	WHEEL C; C; 72dB	6,0J × 16" ET50	CAX205556HY55L/R	5 184 CZK
Yeti	Alpin 5	Michelin	205/55 R16 94H	WHEEL E; B; 68dB	6,0J × 16" ET50	CAX205556BA5L/R	5 087 CZK
Yeti	WR A3	Nokian	205/55 R16 94H	WHEEL C; C; 72dB	7,0J × 16" ET45	CAX205556B6A3L/R	3 931 CZK
Rapid/Rapid Spaceback	Polaris 3	Barum	185/60 R15 88T	WHEEL E; C; 71dB	6,0J × 15" ET38	CAX185605POL3L/R	2 813 CZK
Rapid/Rapid Spaceback	Alpin A4	Michelin	185/60 R15 88T	WHEEL E; C; 70dB	6,0J × 15" ET38	CAX185605ALP4L/R	3 198 CZK
Rapid/Rapid Spaceback	WR D3	Nokian	185/60 R15 88T	WHEEL C; C; 71dB	6,0J × 15" ET38	CAX185605WRD3L/R	3 085 CZK

* Rolling resistance, grip in wet conditions, noise level ⓘ L/R = rotational direction indicator, L – left wheel, R – right wheel

Model	Tire name	Tire producer	Tire dimensions	EU label*	Rim	Order code	Price incl. TAX
Fabia II	Polaris 3	Barum	165/70 R14 81T	WHEEL E; C; 71dB	5,0J × 14" ET35	CAX165704POL3L/R	2 321 CZK
Fabia II	Polaris 3	Barum	175/70 R14 84T	WHEEL E; C; 71dB	5,0J × 14" ET35	CAX175704POL3L/R	2 469 CZK
Fabia II	Polaris 3	Barum	185/55 R15 82T	WHEEL E; C; 71dB	6,0J × 15" ET43	CAX185555POL3L/R	2 913 CZK
Fabia II	Polaris 3	Barum	185/60 R14 82T	WHEEL E; C; 71dB	6,0J × 14" ET37	CAX185604POL3L/R	2 330 CZK
Fabia II	W+	Nokian	165/70 R14 81T	WHEEL F; E; 71dB	5,0J × 14" ET35	CAX165704WL/R	2 391 CZK
Fabia II	WR D3	Nokian	185/55 R15 86H	WHEEL F; E; 71dB	6,0J × 15" ET43	CAX185555WD3L/R	3 200 CZK
Roomster	Polaris 3	Barum	175/70 R14 84T	WHEEL E; C; 71dB	5,0J × 14" ET35	CAX175704POL3L/R	2 469 CZK
Roomster	WR D3	Nokian	185/55 R15 86H	WHEEL F; E; 71dB	6,0J × 15" ET43	CAX185555WD3L/R	3 200 CZK
Citigo	Polaris 3	Barum	165/70 R14 81T	WHEEL E; C; 71dB	5,0J × 14" ET35	CAX165704P3CGL/R	2 074 CZK
Citigo	W+	Nokian	165/70 R14 81T	WHEEL F; E; 71dB	5,0J × 14" ET35	CAX165704CGWL/R	2 025 CZK

* Rolling resistance, grip in wet conditions, noise level ⓘ L/R = rotational direction indicator, L – left wheel, R – right wheel



Barum Polaris 3

- Lower rolling resistance of tires reduces fuel consumption.
- Shoulder blocks remain stable = enhanced control on wet roads.
- Good adhesion on snow, improved biting into the snow = optimum driving stability and excellent braking performance.



Bridgestone Blizzak LM32

- High traction and short braking distance on snow, slush and ice.
- High reliability on wet surface while maintaining performance when driving on dry roads.
- High stability and response to a variety of winter road surfaces.



Continental TS 830 P

- Maximum number of gripping edges = excellent braking performance on wet roads, snow or ice.
- Increased number of traction edges improves the effect of "biting" into the snow = great traction properties on snow.
- Optimized distribution of block stiffness and support for the individual tread blocks = good handling in a straight line, enhanced handling on dry roads.



Michelin Alpin 5

- All-round safety from October to April.
- Excellent on dry, wet and snowy surfaces.
- A new tread pattern for:
 - Greater traction on snow
 - Better resistance to aquaplaning
 - More precise steering response
- Improved tread compound mix for maximum grip on wet and snowy surfaces, while maintaining a high level of energy efficiency.

Continental



Continental TS 850

- An innovated tread design with a high number of sipes – outstanding driving performance on snowy roads.
- New technology of "fan-shaped" sipes.
- Excellent snow-biting ability and good braking performance on ice.
- Exceptionally rigid construction of the bead area – ensuring high driving stability on dry roads as well as in critical situations.
- Very flexible sidewalls – optimum rolling resistance, reduced fuel consumption.

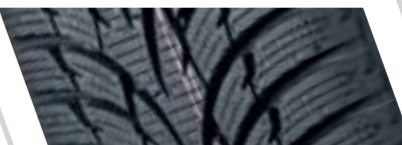
MICHELIN



Michelin Pilot Alpin 4

- Greater safety: the braking distance shortened by 2 m on wet roads.
- Greater control: the best lateral grip on snowy roads and driving stability on wet roads.
- Greater mobility: the most effective traction on snow and ice

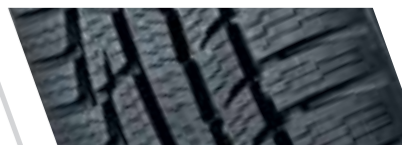
NOKIAN TYRES



Nokian WR D3

- Maximum grip on snowy, wet and dry roads.
- Effective protection from slush-planing and aquaplaning.
- Saves fuel, is environmentally friendly, and has a low rolling resistance.

NOKIAN TYRES



Nokian WR A3

- Extreme adhesion and excellent on-road performance under all winter conditions.
- Driving stability and good vehicle control even at higher speeds.
- Saves fuel, is environmentally friendly, and has a low rolling resistance.

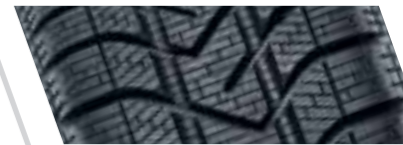
MICHELIN



Michelin Alpin 4

- Maximum safety for one extra winter.
- 10% easier start, compared with the previous-generation tyre.
- 5% shorter braking distance, compared with the previous-generation tyre, lasts 35% longer, compared to its main competitors.

PIRELLI



Pirelli SNOW CONTROL 3

- Directional tread pattern, wide circumferential grooves and optimized sipe pattern – excellent safety in case of aquaplaning and increased traction.
- New, improved compound provides a better adhesion not only on snowy but also on wet road surface.
- Thanks to the patented technology of micro-groove sipes, the contact area of the tire is increased, enhancing driving precision.

NOKIAN TYRES



Nokian W+

- Excellent grip in winter conditions.
- Low rolling resistance.
- Driving comfort under all conditions.
- Saves fuel, is environmentally friendly, and has a low rolling resistance.

HUB COVERS (four-piece kit)



Superb II

Solaris

disk: 7J × 16"

(3T0 071 456)

Price: 1 724 CZK



Superb II Octavia III Yeti FL

Nordic

disk: 6J × 16"

(5E0 071 456)

Price: 1 287 CZK



Octavia III

Tekton

disk: 6,5J × 16"

(5E0 071 456A)

Price: 1 211 CZK





Octavia III
Sidus
disk: 6J × 15"
(5E0 071 455)
Price: 1 059 CZK



Rapid
Rapid Spaceback
Dakara
disk: 6J × 15"
(5JA 071 455)
Price: 1 132 CZK



Octavia II
Avantgarda
disk: 6J × 15"
(CDZ 600 002)
Price: 1 616 CZK



Octavia II
Gaspra
disk: 6J × 15"
(1Z0 071 435)
Price: 1 211 CZK



Citigo
Aries
disk: 5J × 14"
(1ST 071 454)
Price: 1 089 CZK



Rapid
Rapid Spaceback
Metis
disk: 5J × 14"
(5JA 071 454)
Price: 1 061 CZK



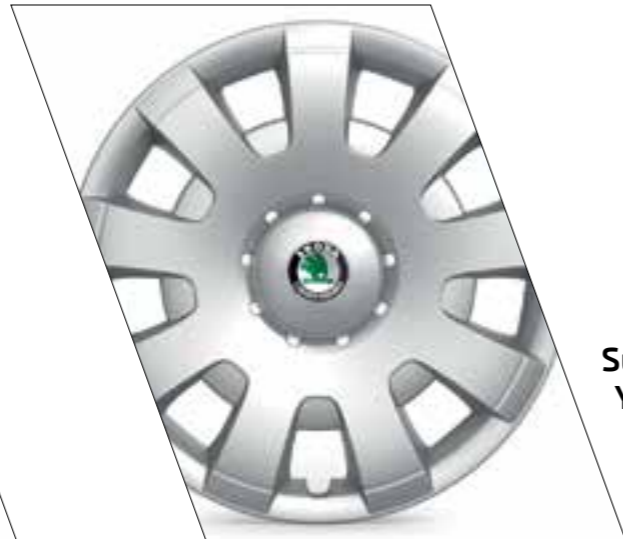
Roomster
Fabia II
Comoros
disk: 5J × 14"
(5J0 071 435)
Price: 1 059 CZK



Roomster
Fabia II
Satellite
disk: 6J × 15"
(5J0 071 435A)
Price: 1 059 CZK



**Roomster
Fabia II**
Hermes
disk: 6J × 15"
(CDB 700 002)
Price: 1 059 CZK



**Superb II
Yeti**
Rif
disk: 7J × 16"
(CDB 800 001)
Price: 1 617 CZK



Octavia II
Freedom
disk: 6,5J × 16"
(1Z0 071 435A)
Price: 1 211 CZK



Octavia II
Castle
disk: 6J × 15"
(CDZ 600 001)
Price: 1 616 CZK



**Roomster
Fabia II**
Castor
disk: 6J × 14"
(CDB 700 004)
Price: 1 059 CZK



**Roomster
Fabia II**
Draco
disk: 5J × 14"
(CDB 700 003)
Price: 1 059 CZK



Octavia II
hub covers
disk: 6J × 16"
(CDB 600 001)
Price: 2 317 CZK



Yeti
Cold
disk: 6J × 16"
(CDB 630 001)
Price: 1 815 CZK

SNOW CHAINS



Superb I, Octavia III Octavia II, Octavia Tour I Yeti

tire: 205/55 R16
205/50 R17 (Octavia III)
(5L0 091 355A)
Price: 3 962 CZK

When choosing snow-chains, it is necessary to follow the indication in your car's certificate of roadworthiness.



Octavia Scout III

tire: 205/60 R16, 205/55 R17
(5E0 091 387A)
Price: 1 868 CZK



Superb II, Octavia III, Octavia II, Octavia Tour, Yeti

tire: 205/55 R16, 205/50 R17
(CEP 800 001)
Price: 1 895 CZK



Yeti 4x4

tire: 215/60 R16, 225/50 R17
(5L0 091 355*)
Price: 2 366 CZK



Octavia III, Octavia II Octavia Tour I

tire: 195/65 R15
(CEP 300 002A)
Price: 2 052 CZK

*Only for rear axle

WINTER PRODUCTS



Rapid, Rapid Spaceback Fabia III

tire: 185/60 R15, 195/55R15
(5JA 091 387)
Price: 2 117 CZK



Fabia III, Fabia II Roomster

tire: 175/70 R14, 185/65 R14, 185/55 R15
(CEP 700 001)
Price: 1 369 CZK



Fabia II, Fabia I

tire: 185/60 R14
(CEP 400 003A)
Price: 1 898 CZK



Citigo, Fabia II, Fabia I

tire: 165/70 R14
(CEP 400 002A)
Price: 1 898 CZK



Snow shovel
(5LO 099 320)
Price: 786 CZK



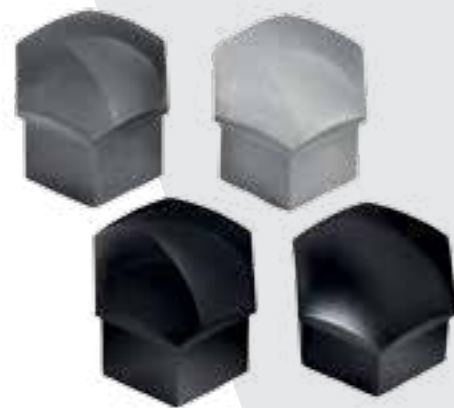
Snow brush with ice scraper
(HFZ 096 007)
Price: 130 CZK



Ski rack
(LBB 000 001)
Price: 2 472 CZK



Wheel rim cleaning gel
(HBA 096 038)
Price: 170 CZK



Bolt caps

silver-gray mat (1Z0 071 215 Z37);
for wheels with safety bolts
000 071 597 B/C* (1Z0 071 215A Z37);
silver-gray gloss (1Z0 071 215 U27);
silver-gray metal (1Z0 071 215 7ZS);
black gloss (1Z0 071 215 9B9);
black mat (1Z0 071 215 01C);
for wheels with safety bolts
000 071 597 B/C* (1Z0 071 215A 01C)



Tow rope

(GAA 500 001)
Price: 299 CZK



Complete wheels covers

(000 073 900B)
Price: 544 CZK



Roof box

(5L6 071 175)
Price: 8 288 CZK



Ski bag

(DMA 600 004A)
Price: 2 632 CZK

* B = Citigo, C = other models

ŠKODA Service App
Allways on your side.



The information on technical specifications, design, equipment, materials, guarantees and appearance were accurate at the time of going to print. The manufacturer reserves the right to changes. The compatibility of complete winter wheels with the car must always be verified in the certificate of roadworthiness. Wheels depicted on the cars may not be part of a range of winter complete wheels. For more detailed information on the full range of ŠKODA Genuine Accessories, including fitting, contact your authorized ŠKODA partner. All prices in the flyer include VAT and are recommended by ŠKODA AUTO. Offer valid while supplies last. ŠKODA AUTO reserves the right to change.



Easily browse winter complete wheels catalogue in an electronic form.